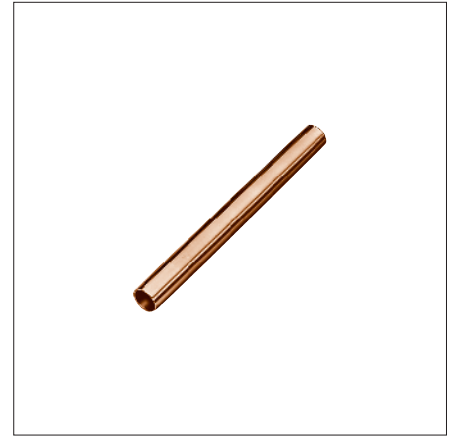
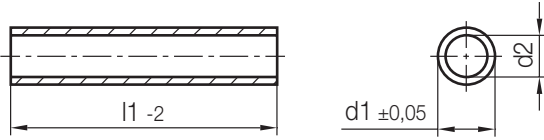


A 3503 /...

Erodierkupfer, Rohr
EDM-copper, pipe
Cuivre pour érosion, à section creuse

Mat.: 2.0060



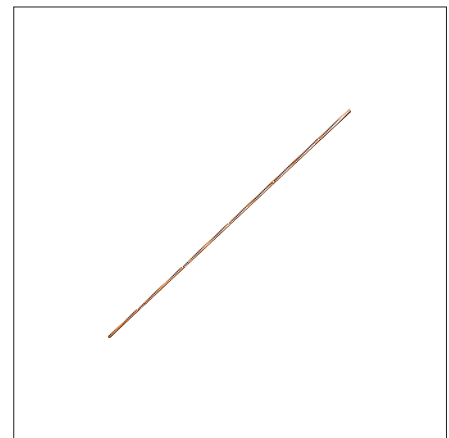
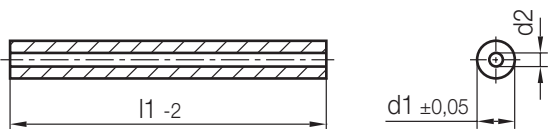
| d1 | d2 | l1 | Nr./No. |
|-----|-----|-------------|-------------------|
| 2,5 | 0,5 | 200 | A3503/2,5x0,5x200 |
| 2,8 | 0,8 | | 2,8x0,8x200 |
| 3 | 1 | | 3 x1 x200 |
| 3,5 | 1,5 | | 3,5x1,5x200 |
| 4 | 2 | | 4 x2 x200 |
| 4,5 | 2,5 | | 4,5x2,5x200 |
| 5 | 3 | | 5 x3 x200 |
| 5,5 | 3,5 | | 5,5x3,5x200 |
| 6 | 4 | | 6 x4 x200 |
| 6,5 | 4,5 | | 6,5x4,5x200 |
| 7 | 5 | 7 x5 x200 | |
| 7,5 | 5,5 | 7,5x5,5x200 | |
| 8 | 6 | 8 x6 x200 | |


| d1 | d2 | l1 | Nr./No. |
|------|-----|-----|---------------------|
| 8,5 | 6,5 | 200 | A3503/ 8,5x 6,5x200 |
| 9 | 7 | | 9 x 7 x200 |
| 9,5 | 7,5 | | 9,5x 7,5x200 |
| 10 | 8 | | 10 x 8 x200 |
| 10,5 | 8,5 | | 10,5x 8,5x200 |
| 11 | 9 | | 11 x 9 x200 |
| 11,5 | 9,5 | | 11,5x 9,5x200 |
| 12 | 10 | | 12 x10 x200 |
| 14 | 12 | | 14 x12 x200 |
| 16 | 14 | | 16 x14 x200 |
| 18 | 16 | | 18 x16 x200 |
| 20 | 18 | | 20 x18 x200 |


A 3504 /...

Startloch-Elektrode, Rohr
Start hole electrode, pipe
Cuivre électrolytique, à section creuse

Mat.: 2.0060



|  | d1 | d2 | l1 | Nr./No. |
|---|-----|-----|-----|-------------------|
| 10 | 0,5 | 0,2 | 315 | A3504/0,5x0,2x315 |
| | 0,8 | 0,3 | | 0,8x0,3x315 |
| | 1 | | | 1 x0,3x315 |
| | 1,5 | | | 1,5x0,3x315 |

|  | d1 | d2 | l1 | Nr./No. |
|---|-----|-----|-----|------------------|
| 10 | 2 | 0,3 | 315 | A3504/2 x0,3x315 |
| | 2,5 | | | 2,5x0,3x315 |
| | 3 | | | 3 x0,3x315 |