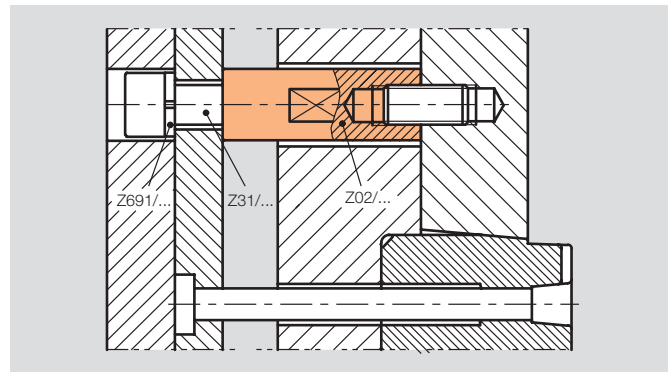
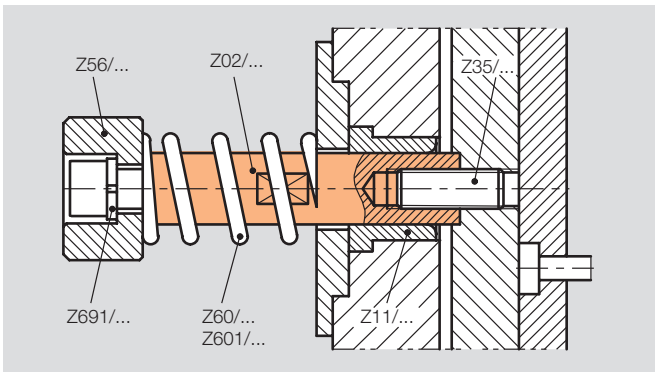
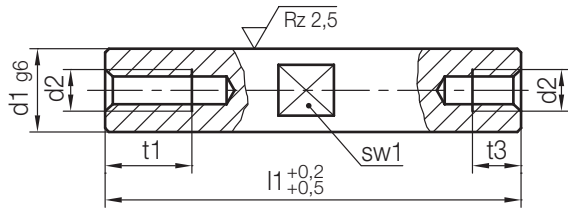
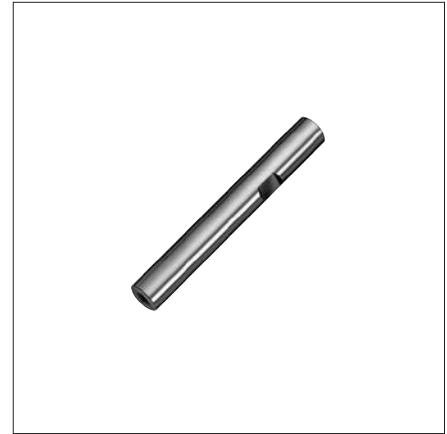


# Z02/...

Auswerferbolzen  
Ejector rod  
Barre d'attelage

Mat.: ≈ 1.0401 / 690 + 70 HV 30



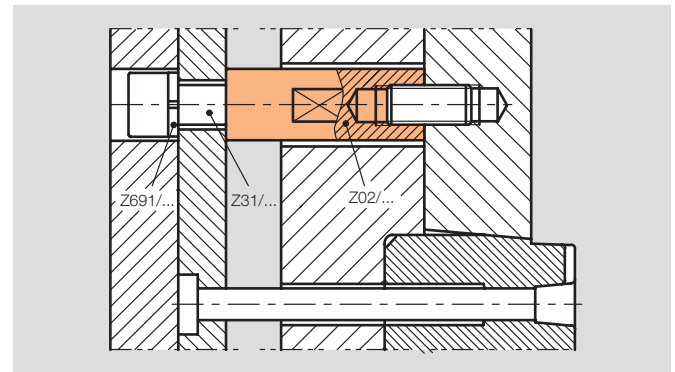
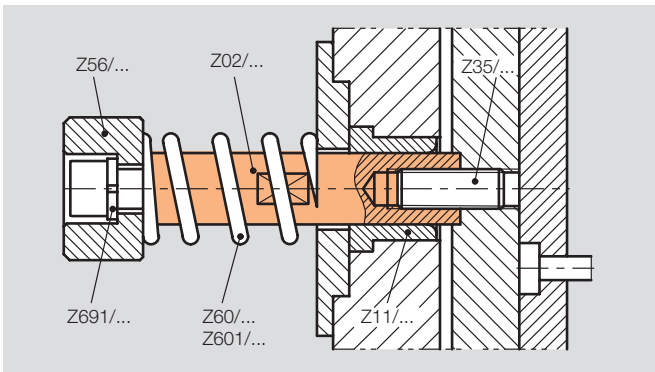
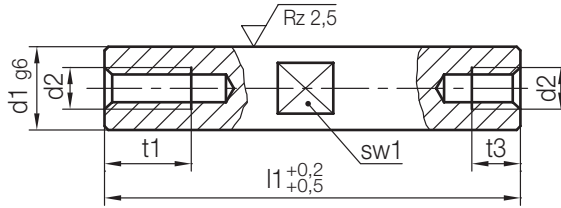
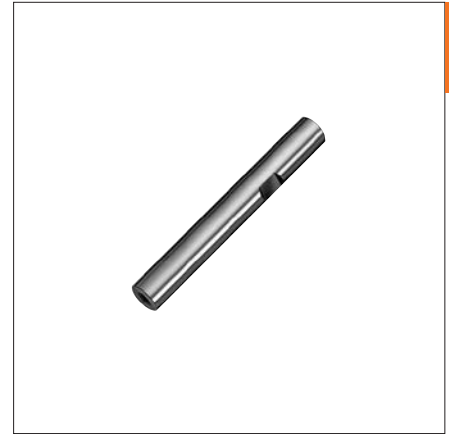
sw1	t3	t1	d2	d1	l1	Nr./No.
9	9	16	M6	10	60	Z02/10x 60
					70	70
					80	80
					100	100
					120	120
					140	140
					160	160
12	11	16	M8	14	60	Z02/14x 60
					70	70
					80	80
					100	100
					120	120
					140	140
					160	160
14	20	12	M10	18	70	Z02/18x 70
					160	160
					180	180
					200	200
					300	300

sw1	t3	t1	d2	d1	l1	Nr./No.
14	20	12	M10	18	80	Z02/18x 80
					100	100
					120	120
					140	140
					160	160
					180	180
					200	200
16	25	14	M12	20	70	Z02/20x 70
					80	80
					100	100
					120	120
					140	140
					160	160
					180	180
16	14	25	M12	20	70	Z02/20x 70
					80	80
					100	100
					120	120
					200	200

# Z02/...

Auswerferbolzen  
Ejector rod  
Barre d'attelage

Mat.: ≈ 1.0401 / 690 + 70 HV 30



sw1	t3	t1	d2	d1	l1	Nr./No.		
16	14	25	M12	20	220	Z02/20x220		
					240	240		
					340	340		
19	25	14	M12	24	70	Z02/24x 70		
					80	80		
					100	100		
					120	120		
					140	140		
	14	25					160	160
							180	180
							200	200
							220	220
							240	240
25	14				260	260		
					380	380		
24	30	16	M16	30	100	Z02/30x100		
					120	120		
					140	140		

sw1	t3	t1	d2	d1	l1	Nr./No.		
24	30	16	M16	30	160	Z02/30x160		
					180	180		
					200	200		
					220	220		
					260	260		
36	40	20	M20	40	340	340		
					380	380		
					160	Z02/40x160		
					180	180		
							200	200
							220	220
							240	240
							260	260