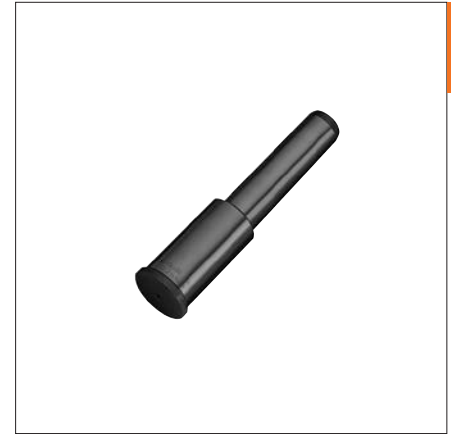
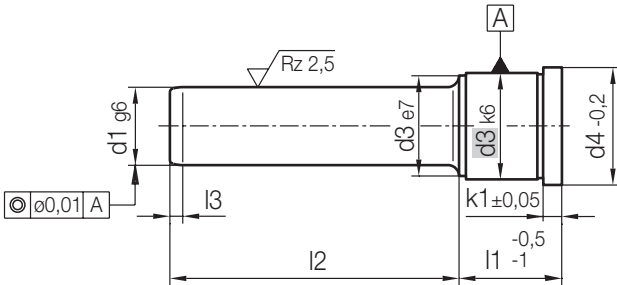


Z031/...

Führungssäule, DLC, ohne Zentrieransatz
 Guide pillar, DLC, flush location head
 Colonne de guidage, DLC, sans plot de centrage

Mat.: ≈ 1.0401 / DLC beschichtet
 with DLC coating
 avec revêtement DLC



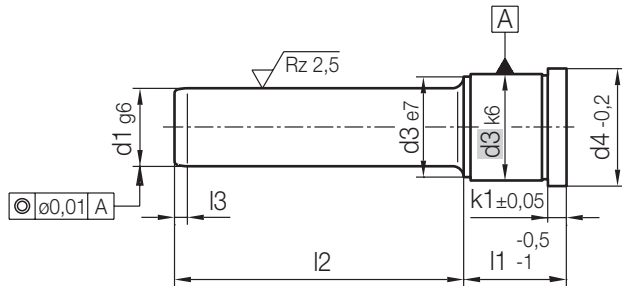
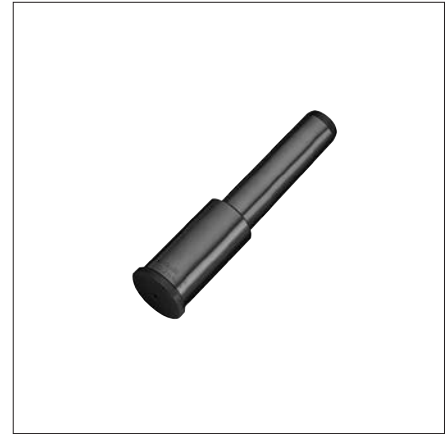
k1	l3	d4	d3	l1	d1	l2	Nr. / No.				
3	4	16	14	22	9	25	Z031/ 22x 9x 25				
					10	25	10x 25				
					55	55					
					27	9	30	27x 9x 30			
					10	30	10x 30				
					36	9	25	36x 9x 25			
				6	7	25	20	22	14	20	Z031/ 22x14x 20
									35	35	
									55	55	
									65	65	
									70	70	
									90	90	
6	7	25	20	15	20	15x 20					
					35	35					
					55	55					
					65	65					
					70	70					
					90	90					
					27	14	20	27x14x 20			
					35	35					
					45	45					
				55	55						
				65	65						
				85	85						
				105	105						
				15	20	15x 20					
				35	35						
				45	45						
				55	55						
				65	65						
85	85										

k1	l3	d4	d3	l1	d1	l2	Nr. / No.
6	7	25	20	27	15	105	Z031/ 27x15x105
					14	35	14x 35
					55	55	
					65	65	
					75	75	
					95	95	
					15	35	15x 35
					55	55	
					65	65	
					75	75	
					95	95	
					46	14	35
				45	45		
				65	65		
				15	35	15x 35	
				45	45		
				65	65		
				56	14	35	56x 14x 35
55	55						
75	75						
15	35	15x 35					
55	55						
75	75						
66	14	55	66x 14x 55				
15	55	15x 55					
31	26	27	18	35	Z031/ 27x18x 35		
				55	55		
				60	60		
				70	70		
				80	80		
				85	85		
				105	105		
				125	125		
				20	35	20x 35	
				55	55		
				60	60		
				70	70		
80	80						
85	85						

Z031/...

Führungssäule, DLC, ohne Zentrieransatz
 Guide pillar, DLC, flush location head
 Colonne de guidage, DLC, sans plot de centrage

Mat.: ≈ 1.0401 / DLC beschichtet
 with DLC coating
 avec revêtement DLC



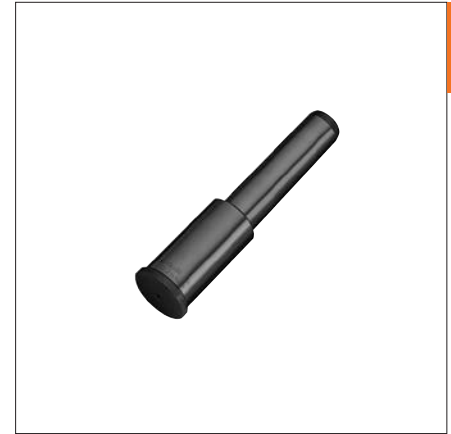
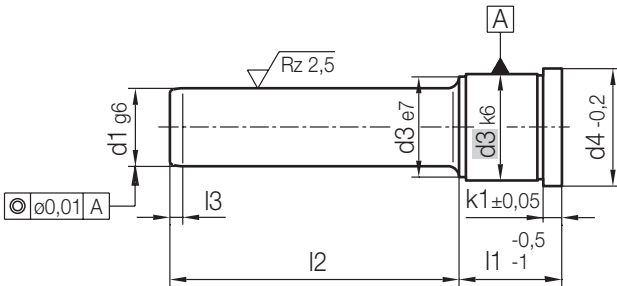
k1	l3	d4	d3	l1	d1	l2	Nr. / No.				
6	7	31	26	27	20	105	Z031/ 27x20x105				
						125	125				
					36	18	35	Z031/ 36x18x 35			
							45	45			
						50	50				
						55	55				
						65	65				
						75	75				
						80	80				
						95	95				
						115	115				
						135	135				
					46	18	45	Z031/ 46x18x 45			
								65	65		
							85	85			
							135	135			
							165	165			
							20	45	20x 45		
				65					65		
				85					85		
				135					135		
				165					165		
				56					18	35	Z031/ 56x18x 35
											55
										75	75
							95	95			
					20	35	20x 35				
							55	55			
							75	75			

k1	l3	d4	d3	l1	d1	l2	Nr. / No.							
6	7	31	26	56	20	95	Z031/ 56x20x 95							
						66	66x18x 55							
					76	18	55	75						
							75	75						
						20	55	20x 55						
								75	75					
								86	18	55	Z031/ 76x18x 55			
										75	75			
									20	55	20x 55			
											75	75		
											86	18	95	Z031/ 86x18x 95
													20	20x 95
					35	30	27	22	45	Z031/ 27x22x 45				
										70	70			
									85	85				
									105	105				
									125	125				
									165	165				
				24					45	24x 45				
										70	70			
										85	85			
										105	105			
										125	125			
										165	165			
										36	22	45	Z031/ 36x22x 45	
													55	55
												75	75	
												80	80	
				95					95					
				24					45			24x 45		
					55	55								
					70	70								
					75	75								
					80	80								
					95	95								
					115	115								
					135	135								
					165	165								

Z031/...

Führungssäule, DLC, ohne Zentrieransatz
 Guide pillar, DLC, flush location head
 Colonne de guidage, DLC, sans plot de centrage

Mat.: ≈ 1.0401 / DLC beschichtet
 with DLC coating
 avec revêtement DLC



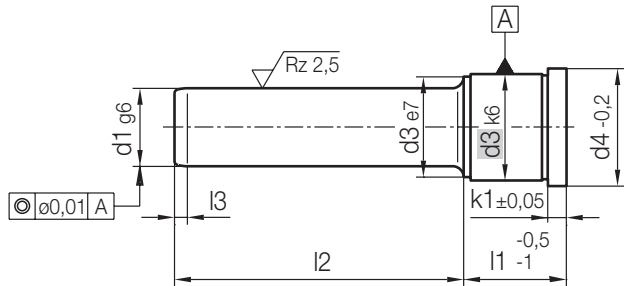
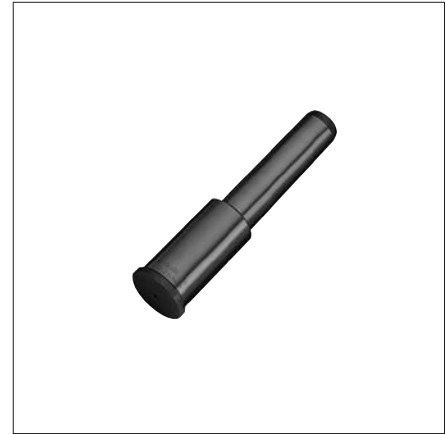
k1	l3	d4	d3	l1	d1	l2	Nr. / No.				
6	7	35	30	36	24	165	Z031/ 36x24x 165				
							46	22	25	46x22x 25	
										45	45
										50	50
										60	60
										65	65
										70	70
										85	85
										105	105
										125	125
										165	165
							24	25	25	24x 25	
										45	45
										50	50
										60	60
				65	65						
				70	70						
				85	85						
				105	105						
				56	22	25	Z031/ 56x22x 25				
							45	45			
							55	55			
							75	75			
							95	95			
							115	115			
							165	165			
							24	25	25	24x 25	
										45	45
				55	55						
				75	75						
				95	95						
				115	115						
				165	165						
66	22	55	Z031/ 66x22x 55								
			75	75							
			95	95							
			115	115							
			155	155							
			24	55	24x 55						

k1	l3	d4	d3	l1	d1	l2	Nr. / No.							
6	7	35	30	66	24	75	Z031/ 66x24x 75							
							76	22	45	Z031/ 76x22x 45				
										95	95			
										55	55			
										75	75			
										95	95			
										115	115			
										24	45	25	24x 45	
													55	x55
													75	75
													95	95
							115	115						
							86	22	55				Z031/ 86x22x 55	
													75	75
													95	95
				24	55	25				24x 55				
										75	75			
				96	22	55	Z031/ 96x22x 55							
							75	75						
							95	95						
							24	55	25	24x 55				
				75	75									
				116	22	155	Z031/ 116x22x 155							
							24	155	25	24x 155				
										136	22	135	Z031/ 136x22x 135	
							24	135	25				24x 135	
													27	30
							32	65	25					
				36	30	75				Z031/ 36x30x 75				
							95	95	25	95				
										115	115	25	115	
							155	155	25				155	
										32	75	25	32x 75	
95	95	25	95											
			115	115	25	115								
155	155	25				155								
			46	30	45	Z031/ 46x30x 45								

Z031/...

Führungssäule, DLC, ohne Zentrieransatz
 Guide pillar, DLC, flush location head
 Colonne de guidage, DLC, sans plot de centrage

Mat.: ≈ 1.0401 / DLC beschichtet
 with DLC coating
 avec revêtement DLC



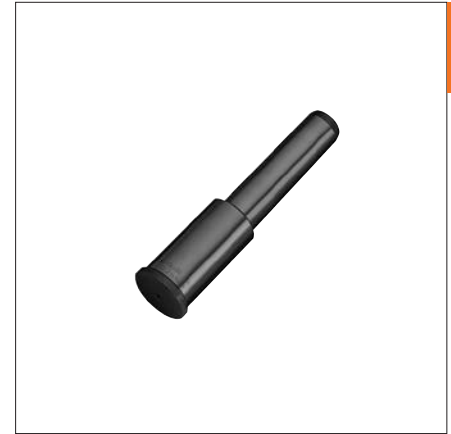
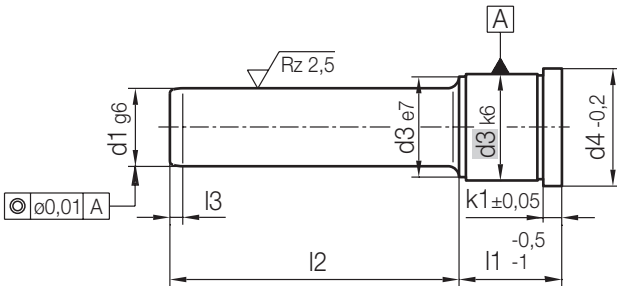
k1	l3	d4	d3	l1	d1	l2	Nr. / No.	
6	7	47	42	46	30	65	Z031/ 46x30x 65	
						85	85	
						105	105	
						125	125	
						165	165	
					32	45	32x 45	
						65	65	
						85	85	
						105	105	
						125	125	
						165	165	
						56	30	55
				75				75
				95				95
				115				115
				135				135
				32			55	32x 55
					75		75	
					95		x95	
					115		115	
					135		135	
					175		175	
					66		30	55
				75		75		
				95		95		
				115		115		
				135		135		
				32		55	32x 55	
						75	75	
						95	95	
						115	115	
						135	135	
						175	175	
						76	30	55
				75	75			
				95	95			
				115	115			
				135	135			
				32	55		32x 55	
					75		75	
					95		95	
					115		115	
					135		135	
					175		175	

k1	l3	d4	d3	l1	d1	l2	Nr. / No.			
6	7	47	42	76	30	155	Z031/ 76x30x 155			
						32	55	32x 55		
						75	75			
						95	95			
						115	115			
					86	30	55	Z031/ 86x30x 55		
							75	75		
							95	95		
							115	115		
							155	155		
						32	55	32x 55		
							75	75		
				95			95			
				115			115			
				155			155			
				96			30	75	Z031/ 96x30x 75	
								95	95	
					115	115				
					155	155				
					32	75		32x 75		
					32	75	95			
						115	115			
						155	155			
						116	30	75	Z031/116x30x 75	
								115	115	
								155	155	
								32	75	32x 75
				115	115					
				32	75		95			
					115		115			
					155		155			
					136		30	95	Z031/136x30x 95	
								115	115	
								155	155	
								32	95	32x 95
				115		115				
				32		95	115			
						155	155			
						156	30	115	Z031/156x30x 115	
								155	155	
								32	115	32x 115

Z031/...

Führungssäule, DLC, ohne Zentrieransatz
 Guide pillar, DLC, flush location head
 Colonne de guidage, DLC, sans plot de centrage

Mat.: ≈ 1.0401 / DLC beschichtet
 with DLC coating
 avec revêtement DLC



k1	l3	d4	d3	l1	d1	l2	Nr. / No.
6	7	47	42	156	32	155	Z031/156x32x155
				196	30	195	Z031/196x30x195
				32			32x195
10	10	60	54	46	40	95	Z031/46x40x 95
				42			42x 95
				56	40	75	Z031/ 56x40x 75
				115			115
				195			195
				42	75		42x 75
				115			115
				155			155
				66	40	75	Z031/ 66x40x 75
				42			42x 75
				76	40	115	Z031/ 76x40x115
				175			175
				42	115		42x115
				175			175
				86	40	75	Z031/ 86x40x 75
42			42x 75				
96	40	75	Z031/ 96x40x 75				
115			115				
155			155				
42	75		42x 75				
115			115				
155			155				
116	40	95	Z031/116x40x 95				
195			195				
42	95		42x 95				
195			195				
136	40	215	Z031/136x40x215				
42			42x215				
156	40	155	Z031/156x40x155				
215			215				
42	155		42x155				
215			215				
176	40	135	Z031/176x40x135				
175			175				
42	135		42x135				
175			175				

k1	l3	d4	d3	l1	d1	l2	Nr. / No.	
10	10	60	54	196	40	155	Z031/196x40x155	
						195	195	
						235	235	
						42	155	42x155
						195	195	
						235	235	
20	10	86	80	156	60	155	Z031/156x60x155	
						196	196x60x175	
						246	246x60x195	
						116	50	135
136			136x50x135					
196			196x50x175					