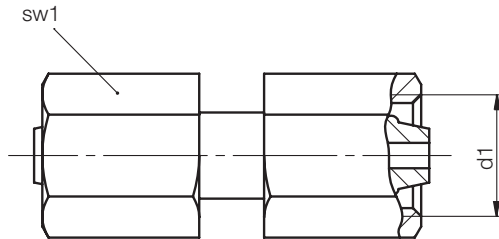


## Z2704/...

Gerade Verbindung  
Straight connector  
Raccord droit

Mat.: St37  
DIN EN ISO 8434-1 (DIN 2353)



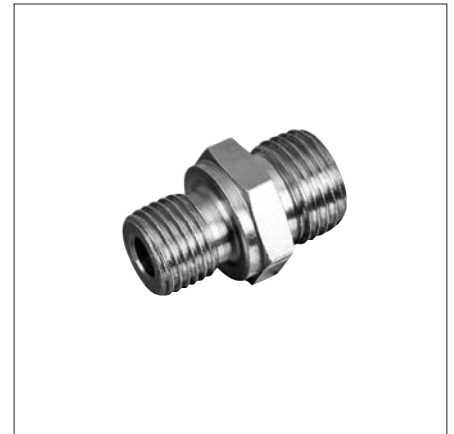
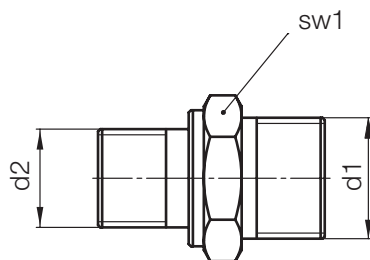
4

Typ	sw1	d1	Nr./No.
GZ06L	14	<b>M12x1,5</b>	Z2704/12x1,5
GZ08L	17	<b>M14x1,5</b>	14x1,5
GZ10L	19	<b>M16x1,5</b>	16x1,5
GZ12L	22	<b>M18x1,5</b>	18x1,5
GZ15L	27	<b>M22x1,5</b>	22x1,5

## Z2710/...

Gerade Einschraubverschraubung  
Straight male stuck coupling  
Raccord à visser droit

Mat.: St37  
DIN EN ISO 8434-1 (DIN 2353)



Typ	sw1	d1	d2	Nr./No.
GE06LR	14	<b>M12x1,5</b>	<b>G1/8</b>	Z2710/12x1,5xG1/8
GE08LR	19	<b>M14x1,5</b>	<b>G1/4</b>	14x1,5xG1/4
GE10LR		<b>M16x1,5</b>		16x1,5xG1/4
GE12LR	22	<b>M18x1,5</b>	<b>G3/8</b>	18x1,5xG3/8
GE15LR	27	<b>M22x1,5</b>	<b>G1/2</b>	22x1,5xG1/2

**Anschluss  
Hydrauliksystem  
Connection to  
hydraulic system  
Raccord du  
système  
hydraulique**

