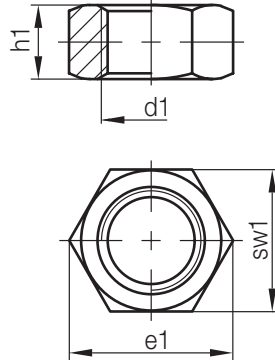



# Z28/...


Sechskantmutter  
Hexagon nut  
Ecrou hexagonal

Mat.: 8.8/800 N/mm<sup>2</sup>  
DIN EN ISO 4032 (DIN EN 24032)



2

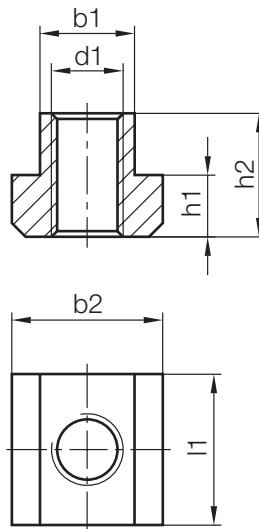
	sw1	e1	h1	d1	Nr./No.
10	5,5	6	2,2	<b>M3</b>	Z28/3
	7	7,7	2,9	<b>M4</b>	4
	8	8,8	3,7	<b>M5</b>	5
	10	11,1	4,7	<b>M6</b>	6
	13	14,4	6,1	<b>M8</b>	8

	sw1	e1	h1	d1	Nr./No.
10	17	18,9	7,6	<b>M10</b>	Z28/10
	19	21,1	9,6	<b>M12</b>	12
	22	24,5	10,3	<b>M14</b>	14
	24	26,8	12,3	<b>M16</b>	16
	30	33	14,9	<b>M20</b>	20

# Z285/...

T-Nutenstein, für T-Nuten  
Nut, for T-slots  
Ecrou en T, pour rainures en T

Mat.: 10.9/1000 N/mm<sup>2</sup>  
DIN 508



h2	h1	b2	l1	b1	d1	Nr./No.
8	4	10	10	<b>6</b>	<b>M 5</b>	Z285/ 6x 5
10	6	13	13	<b>8</b>	<b>M 6</b>	8x 6
		15	15	<b>10</b>	<b>M 8</b>	10x 8
14	7	18	18	<b>12</b>	<b>M10</b>	12x10

h2	h1	b2	l1	b1	d1	Nr./No.
16	8	22	22	<b>14</b>	<b>M12</b>	Z285/14x12
18	9	25	25	<b>16</b>	<b>M14</b>	16x14
20	10	28	28	<b>18</b>	<b>M16</b>	18x16
28	14	35	35	<b>22</b>	<b>M20</b>	22x20

 = Verpackungseinheit/packing unit/unité d'emballage