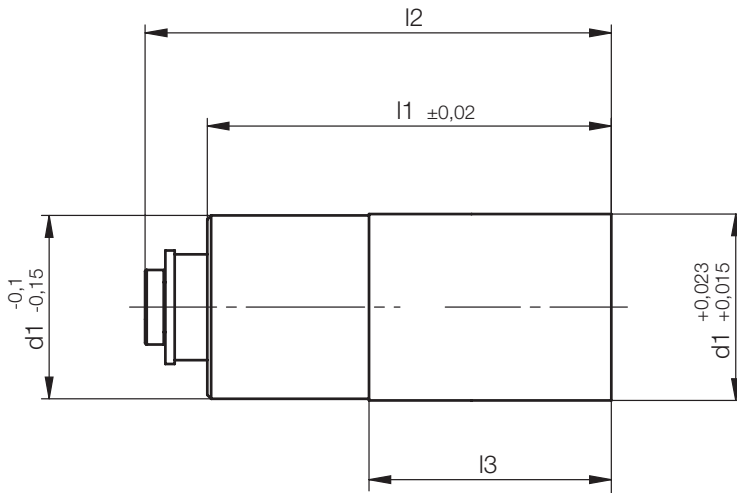
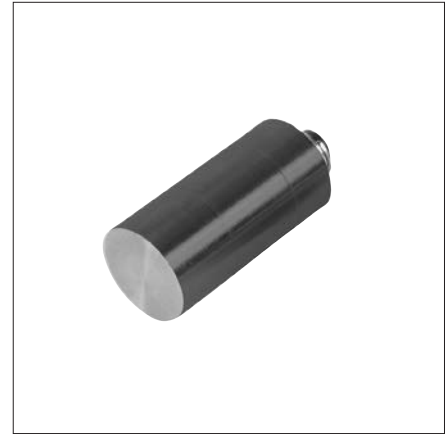


Z4912/...

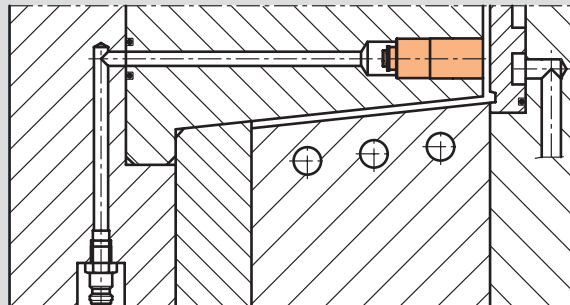
Belüftungsventil, pneumatisch
 Air valve, pneumatically activated
 Soupape, pneumatique

Mat.: 1.4301 / DLC beschichtet
 coated with DLC
 avec revêtement DLC

max. °C: 250



Z4912/...



l3	l2	d1	l1	Nr./No.
8	17,8	6	15	Z4912/ 6x15
11	23,6	8	20	8x20
14	30	12	26	12x26
17	37	16	32	16x32