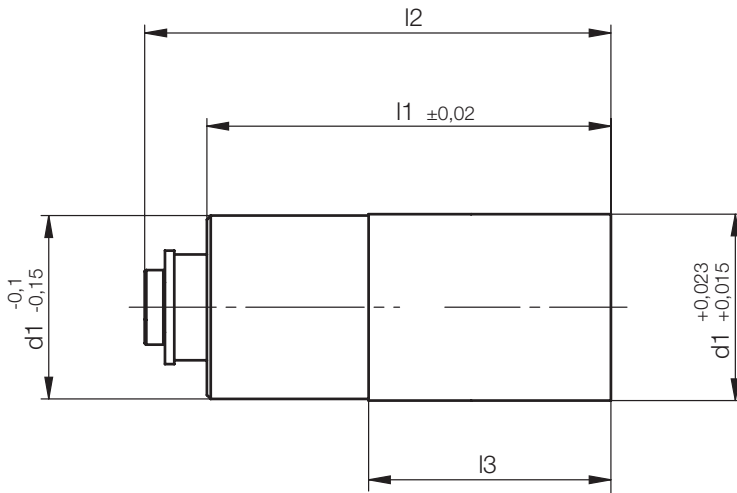
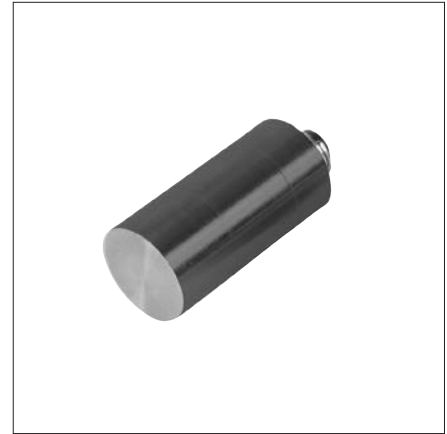


Z4912/...

Belüftungsventil, pneumatisch
Air valve, pneumatically activated
Soupape, pneumatique

Mat.: 1.4301 / DLC beschichtet
coated with DLC
avec revêtement DLC

max. °C: 250



l3	l2	d1	l1	Nr./No.
8	17,8	6	15	Z4912/ 6x15
11	23,6	8	20	8x20
14	30	12	26	12x26
17	37	16	32	16x32

Z4912/...

