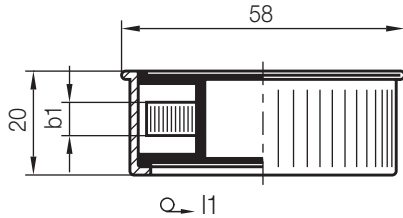


Z93/...

Dichtband
Sealing tape
Ruban d'étanchéité

Mat.: PTFE
max. °C: 250
min. °C: -160

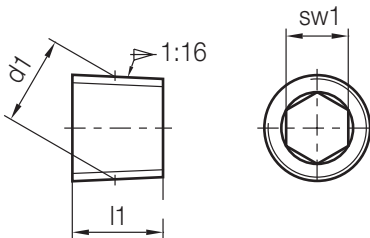


l1 [m]	b1	Nr./No.
12	6,5	Z93/ 12x 6,5
	13	12x13

Z94/...

Verschlusschraube, konisch
Hexagon socket pipe plug, conical
Bouchon, conique

Mat.: 2.0401
DIN 906



	sw1	l1	d1	Nr./No.
10	3	5	M 5x0,5	Z94/ 5x0,5
		8	M 6x0,75	6x0,75
			M 7x1	7x1
	4		M 8x0,75	8x0,75
	5		M 9x1	9x1
			M10x1	10x1
	6		M11x1	11x1

	sw1	l1	d1	Nr./No.
10	6	8	M12x1,5	Z94/ 12x1,5
			M14x1,5	14x1,5
	5	8	R1/8	Z94/ R1/8
		7	R1/4	R1/4
	8		R3/8	R3/8
	10		R1/2	R1/2